

# WOODCRAFT CFMOTORSPORTS

105 Baldwinville Rd  
Winchendon, MA 01475  
(978)297-2977

[www.woodcraft-cfm.com](http://www.woodcraft-cfm.com)

## 05-0755B BMW S1000RR 2015-16 / 05-0759B S1000R 2017 Rearset Instruction Sheet – Racing Use Only

Thank you for selecting CFMOTORSPORTS rearsets. Please note that these components are intended and approved for **racing use only**. As such, the footpegs are solid-mount.

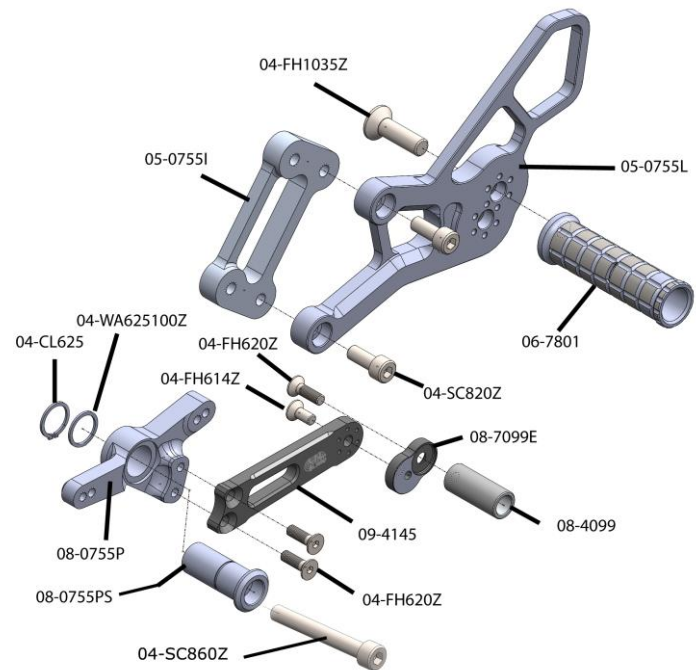
- 1) Remove stock rearsets, footpegs and associated hardware. All components that are re-used in this kit should be cleaned and inspected for damage before re-installation.

### **IMPORTANT**

Tighten all fasteners to factory specification or industry standard. FAILURE TO PROPERLY TIGHTEN ALL FASTENERS MAY CAUSE DAMAGE TO THE MOTORCYCLE, LOSS OF CONTROL AND SERIOUS INJURY OR DEATH

### Shift Side Assembly Installation

- 1) Bolt the 05-0755I inner bracket to the frame in place of the OEM rearsets using the stock hardware.
- 2) Test fit the main 05-0755L main bracket and footpeg to the motorcycle to determine the desired location for the pegs. Once you have determined where you want the pegs, bolt the CFM footpeg to the bracket using the included 04-FH1035Z bolt. **IMPORTANT** - Secure the bolt with LOCTITE for final installation.
- 3) Bolt the 05-0755L bracket to 05-0755I inner bracket using the 04-SC820Z hardware.
- 4) Assemble the CFM shift pedal. Test fit the location of the eccentric toe peg before final assembly with Loctite. Once the optimum location is found, attach the OEM BMW hiem joint (not shown), 08-0755P shift pivot, 09-4145 shaft, 08-7099E base plate and 08-4099 toe peg using the supplied hardware.



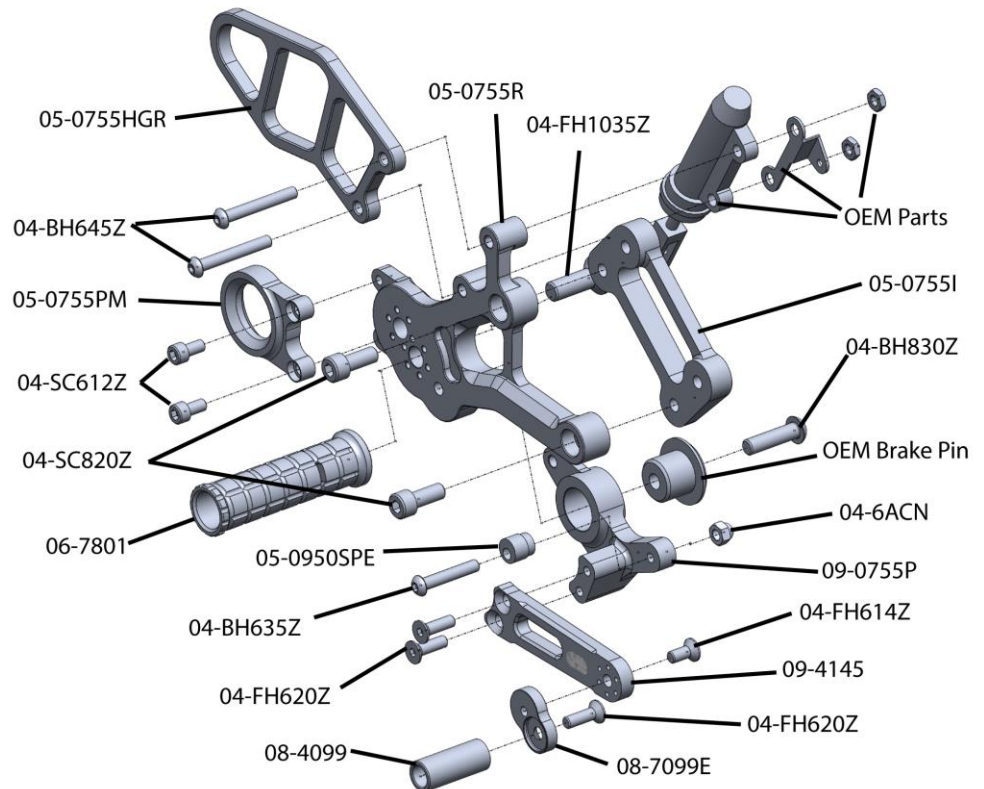
**IMPORTANT** - Secure all bolts with LOCTITE.

Note: Standard shift uses the rearward holes, and GP shift uses the forward holes (closer to the rider). The inner holes (closest to the main shifter sleeve) replicate OEM shift action, the outer holes produce a faster shift that requires a little more force at the shift pedal.

- 5) Bolt the shifter to the frame using the 6x60mm bolt, 08-0755PS Sleeve, 04-CL625 circlip and 04-WA625100Z washer. **Important** – the washer is placed between the circlip and the shift pedal.. Use a high quality waterproof grease on the sliding surface of the spacer. **IMPORTANT** - Secure the bolt with LOCTITE.
- 6) You may fine tune the final height of the pedal using a combination of the OEM shift rod adjustments and the eccentric toe piece. Be sure to lock the shift rod in place with the shift rod free-flow nuts when finished.

## Brake Side Assembly Installation

- 1) Bolt the 05-0755I inner bracket to the frame in place of the OEM rearsets using the stock hardware.
- 2) Bolt the CFM footpeg to the bracket using the included FH1035Z bolt. **IMPORTANT** - Secure with LOCTITE.
- 3) Bolt the 05-0755R bracket to 05-0755I inner bracket using the supplied 04-SC820Z hardware.
- 4) Assemble the 09-4145 shaft, 08-7099E plate and 08-4099 toe peg to the 09-0755P brake pivot. **IMPORTANT** - Secure all bolts with LOCTITE.
- 5) Attach the brake pedal to the back of the bracket using the OEM brake pin and supplied 04-BH830Z bolt. Be sure to apply quality waterproof grease to the surface of the OEM brake pin. **IMPORTANT** - Secure the 04-BH830Z bolt with LOCTITE.
- 6) Install the 05-0950SPE eccentric brake stop to the 09-0755P brake pivot using the 04-BH635Z bolt. Orient the spacer so there is a small gap between the spacer and the main rearset bracket when the brake is not being applied. This spacer prevents the brake pedal assembly from inadvertently rotating counterclockwise. Secure the bolt with LOCTITE. The 6mm acron nut can then be installed on the end of this bolt, and you can then install the OEM brake return spring from the OEM tab and hook it to the exposed threads on the 04-BH635Z bolt.
- 7) Bolt the master cylinder and 05-0755HGR heel guard to the bracket using the 04-BH645Z bolts. The master cylinder is secured on the back side with the OEM spring tab and nuts shown above. Finally, attach the master cylinder to the brake pedal using the stock hardware and adjust the brake pedal to your desired height using the eccentric toe piece and the OEM adjuster at the base of the master cylinder.
- 8) Install the OEM BMW rubber mounts and spacers (not shown) into the \*\*05-0755PM and secure the mount to the bracket using the 04-SC612Z hardware. **IMPORTANT** - Secure all bolts with LOCTITE. Use the OEM pipe mounting hardware to secure the muffler. **\*\*NOTE:** The pipe mount is not required for 2017 S1000R model.



**BE SURE THAT ALL COMPONENTS OPERATE AND RETURN FREELY BEFORE USE** If you have any questions regarding installation, please feel free to contact us.

### **IMPORTANT**

Installation and use of this product will change the response of the motorcycle to rider control inputs. Failure of the rider to adapt to these changes may result in a loss of control, and serious injury or death. Improper installation and/or failure to comply with all warnings and instructions may cause a loss of control and serious injury or death. **DO NOT INSTALL OR USE THIS PRODUCT IF YOU ARE UNABLE TO DO SO IN COMPLIANCE WITH ALL INSTRUCTIONS AND WARNINGS. SEEK THE ASSISTANCE OF A TRAINED PROFESSIONAL TECHNICIAN.** Installation of this product releases the Woodcraft Technologies, Inc. from all liabilities as to the use of this product. The user recognizes that any alteration or modification to any motorcycle may increase the risk of injury or accident and may also render the motorcycle illegal for public road use